



- 1
- 2
- 3
- 4
- 5
- 6
- 7
- 8
- 9
- 10
- 11
- 12
- 13
- 14
- 15
- 16
- 17
- 18
- 19

VERSIONS

- Type **A1**: chamfer, top
- Type **A2**: chamfer, bottom
- Type **A3**: chamfer, right
- Type **A4**: chamfer, left
- Type **AU**: unmounted

GUIDE

- Steel precision casting **ST**
- Weldable, blackened
- Stainless steel precision casting AISI CF-8 **NI**
- Weldable

LEVER

- Steel precision casting
- Zinc plated, blue passivated for **ST**
- Stainless steel precision casting AISI CF-8 for **NI**

PLUNGER

- Steel, case-hardened
- Zinc plated, blue passivated **ST**
- Stainless steel AISI 431, hardened **NI**

SOCKET BUTTON HEAD SCREW DIN 7985

- Zinc-plated steel **ST**
- Stainless Steel AISI 304 **NI**

SPRING

AISI 316Ti stainless Steel

FEATURES AND APPLICATIONS

Spring latches GN 724.1 have a plunger pin with square cross-section, a latching surface on one side and a chamfer on the other. When moving in the direction of the chamfered pin, the plunger pin passes over grooves and edges, as the chamfered pin moves the plunger pin into the guide. The plunger pin automatically latches into place when moved toward the latching surface. The latching can be released by pulling the latch arm.

The notch at the upper end of the curve causes the latch to be held in place if the plunger pin needs to be kept temporarily from protruding. The dimensional tolerances between plunger pin and guide are selected so that the functional reliability is guaranteed even after welding, applying a corrosion protection layer or in case of contamination. For type AU, the latching mechanism must be lubricated during installation, types A1, A2, A3 and A4 are pre-lubricated. The latching mechanism can be re-lubricated if necessary.

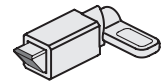
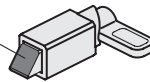
For fastening by welding, the unmounted type AU is particularly recommended to avoid changes to the microstructure of the material due to heating of the spring and plunger pin. In this case, the spring latch is assembled only after the surface treatment of the welded guide.



GN 724.1-A1

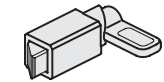
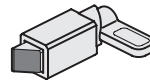
GN 724.1-A2

Chamfer



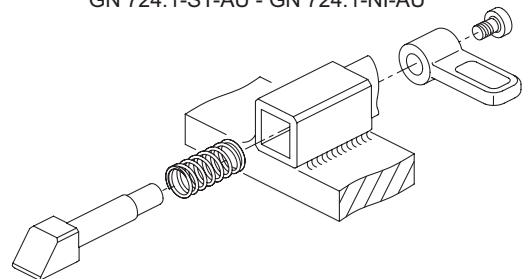
GN 724.1-A3

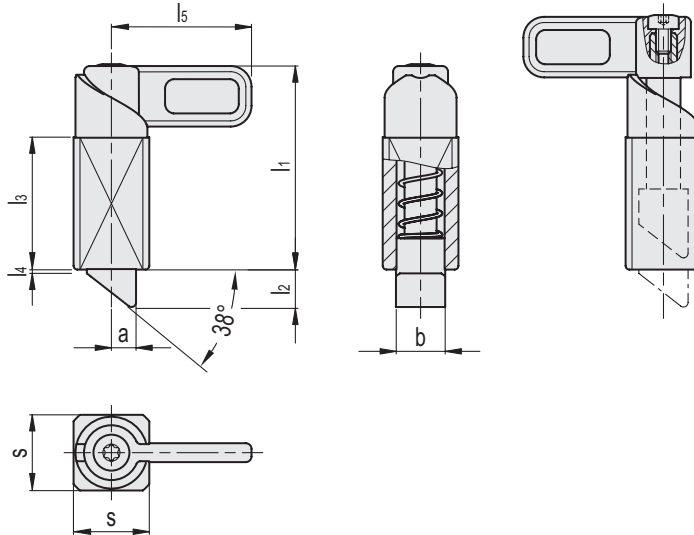
GN 724.1-A4



Assembly instruction

GN 724.1-ST-AU - GN 724.1-NI-AU





Conversion Table	
1 mm = 0.039 inch	
b	
mm	inch
13	0.51
20	0.78

GN 724.1-ST-A1

METRIC

Code	Description	a	b	l1	l2	l3	l4	l5	s	Spring preload [N]	Spring max load [N]	⚖️
GN.78502	GN 724.1-13-20-A1-ST	6.5	13	54	10	35	1	37	20	14	35	141
GN.78516	GN 724.1-20-30-A1-ST	10	20	84	15	54	1.5	55	30	22	70	489

GN 724.1-ST-A2

Code	Description	a	b	l1	l2	l3	l4	l5	s	Spring preload [N]	Spring max load [N]	⚖️
GN.78504	GN 724.1-13-20-A2-ST	6.5	13	54	10	35	1	37	20	14	35	141
GN.78518	GN 724.1-20-30-A2-ST	10	20	84	15	54	1.5	55	30	22	70	489

GN 724.1-ST-A3

Code	Description	a	b	l1	l2	l3	l4	l5	s	Spring preload [N]	Spring max load [N]	⚖️
GN.78506	GN 724.1-13-20-A3-ST	6.5	13	54	10	35	1	37	20	14	35	141
GN.78520	GN 724.1-20-30-A3-ST	10	20	84	15	54	1.5	55	30	22	70	489

GN 724.1-ST-A4

Code	Description	a	b	l1	l2	l3	l4	l5	s	Spring preload [N]	Spring max load [N]	⚖️
GN.78508	GN 724.1-13-20-A4-ST	6.5	13	54	10	35	1	37	20	14	35	141
GN.78522	GN 724.1-20-30-A4-ST	10	20	84	15	54	1.5	55	30	22	70	489

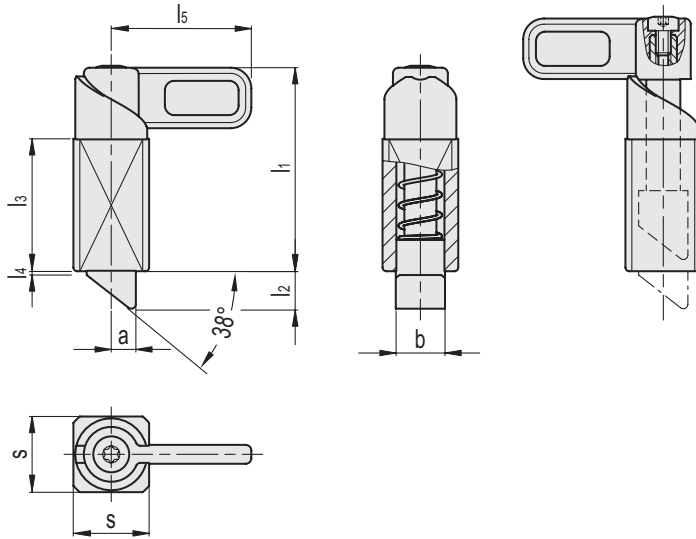
GN 724.1-ST-AU

Code	Description	a	b	l1	l2	l3	l4	l5	s	Spring preload [N]	Spring max load [N]	⚖️
GN.78510	GN 724.1-13-20-AU-ST	6.5	13	54	10	35	1	37	20	14	35	141
GN.78524	GN 724.1-20-30-AU-ST	10	20	84	15	54	1.5	55	30	22	70	489



Indexing and positioning elements

- 1
- 2
- 3
- 4
- 5
- 6
- 7
- 8
- 9
- 10
- 11
- 12
- 13
- 14
- 15
- 16
- 17
- 18
- 19



Conversion Table	
1 mm = 0.039 inch	
b	
mm	inch
13	0.51
20	0.78

INOX STAINLESS STEEL **METRIC**

GN 724.1-NI-A1

Code	Description	a	b	l1	l2	l3	l4	l5	s	Spring preload [N]	Spring max load [N]	⚖
GN.78501	GN 724.1-13-20-A1-NI	6.5	13	54	10	35	1	37	20	14	35	142
GN.78515	GN 724.1-20-30-A1-NI	10	20	84	15	54	1.5	55	30	22	70	492

GN 724.1-NI-A2

Code	Description	a	b	l1	l2	l3	l4	l5	s	Spring preload [N]	Spring max load [N]	⚖
GN.78503	GN 724.1-13-20-A2-NI	6.5	13	54	10	35	1	37	20	14	35	142
GN.78517	GN 724.1-20-30-A2-NI	10	20	84	15	54	1.5	55	30	22	70	492

GN 724.1-NI-A3

Code	Description	a	b	l1	l2	l3	l4	l5	s	Spring preload [N]	Spring max load [N]	⚖
GN.78505	GN 724.1-13-20-A3-NI	6.5	13	54	10	35	1	37	20	14	35	142
GN.78519	GN 724.1-20-30-A3-NI	10	20	84	15	54	1.5	55	30	22	70	492

GN 724.1-NI-A4

Code	Description	a	b	l1	l2	l3	l4	l5	s	Spring preload [N]	Spring max load [N]	⚖
GN.78507	GN 724.1-13-20-A4-NI	6.5	13	54	10	35	1	37	20	14	35	142
GN.78521	GN 724.1-20-30-A4-NI	10	20	84	15	54	1.5	55	30	22	70	492

GN 724.1-NI-AU

Code	Description	a	b	l1	l2	l3	l4	l5	s	Spring preload [N]	Spring max load [N]	⚖
GN.78509	GN 724.1-13-20-AU-NI	6.5	13	54	10	35	1	37	20	14	35	142
GN.78523	GN 724.1-20-30-AU-NI	10	20	84	15	54	1.5	55	30	22	70	492

Indexing and positioning elements